

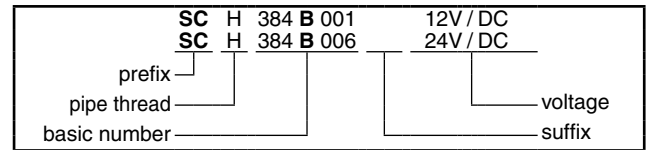
OPTIONS AND ACCESSORIES

- Flexible tubes having to use an external guiding device for optimum support (see dimensions):
 - with an outside diameter lower than 2,2 mm (catalogue numbers SCH384B001 to ..B004)
 - with an outside diameter lower than 3,5 mm (catalogue number SCH384A005)
 - with an outside diameter lower than 6 mm (catalogue numbers SCH384B006 and ..007)
- For use on tubes other than those recommended, contact us
- Plug with visual indication and peak voltage suppression or with cable length of 2 m

INSTALLATION

- The solenoid valves can be mounted in any position without affecting operation. However, for optimum performance it is recommended that they be fitted with the solenoid operator at the top.
- Fixing plate built in between the body and the coil for assembly in a bank on a base plate
- Flexible tubes are not included in our supply
- Do not connect the solenoid valve to the power supply without fitting a flexible tube beforehand**
- Installation/maintenance instructions are included with each valve

ORDERING EXAMPLES:



DIMENSIONS (mm), WEIGHT (kg)



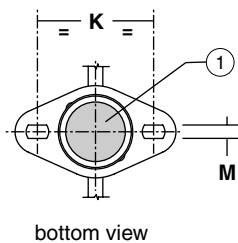
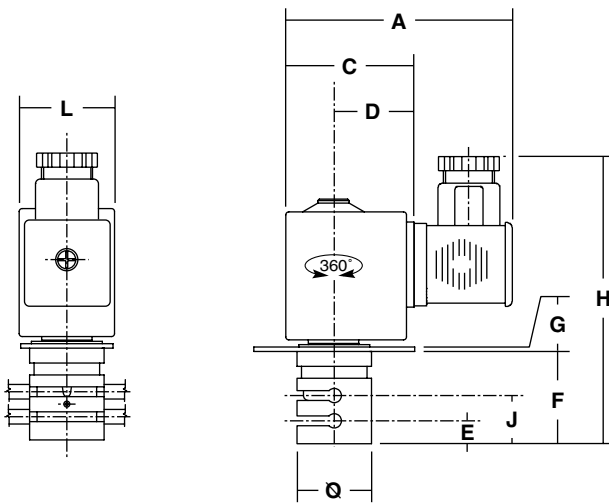
TYPE 01
Prefix "SC" Solenoid
IEC 335 / DIN 43650
IP65

Type 01: SCH384B001/002/003/004

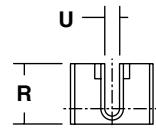
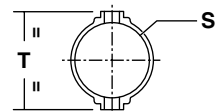


TYPE 02-03
Prefix "SC" Solenoid
IEC 335 / ISO 4400
IP65

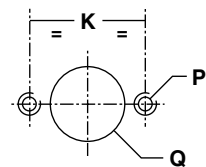
Type 02: SCH384A005
Type 03: SCH384B006/B007



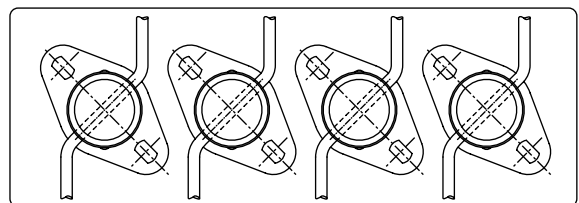
tube guiding device



arrangement for wall-fitting



example of banked assembly



① Impulse manual operator

type	prefix option	catalogue number	Ø	A	C	D	E	F	G	H	J	K	L	M	P	Q	R	S	T	U	weight ⁽¹⁾	tube guiding device	
																						catalogue number	weight
01	SC	SCH384B001/002/003/004	16	49,5	23,5	15	6	20	1	66	11	24	17	3,3	M3	16,5	10,7	16	24	2,2	0,06	C140094	0,005
02	SC	SCH384A005	25	78	43	27	10,5	32	1,5	99	17,5	39	32	4,5	M4	25,5	14	25	33	3,2	0,30	C140095	0,009
03	SC	SCH384B006/B007	30	84	49	28	13	43,5	1,5	99	24,5	45,5	42	4,5	M4	30,5	24	30	39	6	0,45	C140096	0,015

⁽¹⁾ Incl. coil(s) and connector(s)..