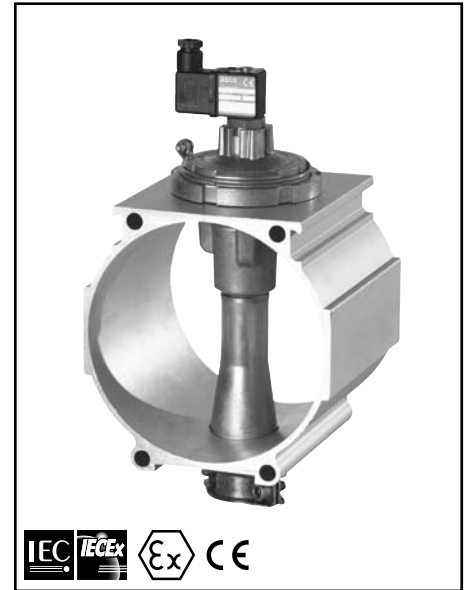


FEATURES

- Power Pulse Tank System using aluminium profile and end covers with CE approval according to Directive 97/23/EC for Pressure Equipment
- Full immersed valve system with special springless piston/diaphragm design offers highest peak pressure and best flow performance operating features required for dust collector applications
- The high quality TPE piston/diaphragm guarantees a long operating life and a large temperature range
- Possibility to apply different combinations of pitch distances and upto 24 valves
- Easy to connect to other tank systems. Service connections for different accessories such as: filter regulator, pressure gauge, safety valve and automatic/manual drain valve
- Several blow pipe connections available, such as: Quick Mount, push-in, hose or threaded
- Built-in silencers reduce the noise and prevent foreign particles from entering the valve
- The integral operators are provided with epoxy moulded F-class coils. Various optional waterproof and explosionproof solenoids for use in potentially explosive atmospheres (gas & dust) according to Directive ATEX 94/9/EC can be mounted on the same basic valve (see pages 49 to 57)

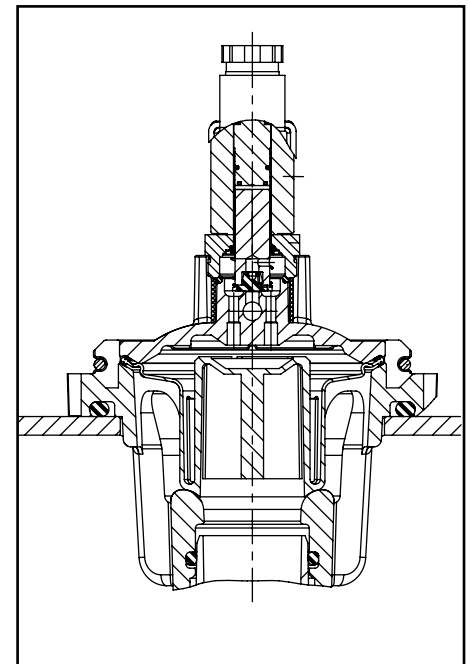


GENERAL

Differential pressure (PS) 0,3 to 8,5 bar [1 bar = 100 kPa]
Ambient temperature range -20°C to +85°C

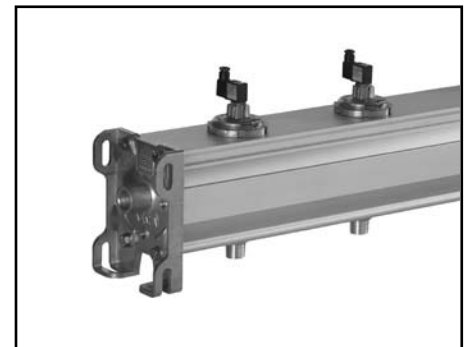
Tank System volume 0,20 dm³ per cm tank
recommended min. tank volume 10 dm³ (equals to 500 mm tank length)
min. pitch distance 120 mm
maximum length 3000 mm
min. pulse time 50 ms

fluid	temperature range (TS)	piston/diaphragm
air	-20 to +100 °C	TPE (thermoplastic polyester elastomer)



CONSTRUCTION

Tank	Anodized aluminium
Adapter/body	Aluminium
Clipping	Stainless steel
Clamps	Stainless steel
Bolts (clamps)	Stainless steel
Core tube	Stainless steel
Core and plugnut	Stainless steel
Core spring	Stainless steel
Sealings & disc	NBR (nitrile)
Piston/diaphragm	TPE (thermoplastic polyester elastomer)
Shading coil	Copper
Coil insulation class	F
Connector	Spade plug (cable Ø 6 - 8 mm)
Connector specification	3 x DIN 46244
Electrical safety	IEC 335



ELECTRICAL CHARACTERISTICS

Standard voltages DC (=) 24V
 (Other voltages and 60 Hz on request) AC (-) 24V - 115V - 230V/50Hz

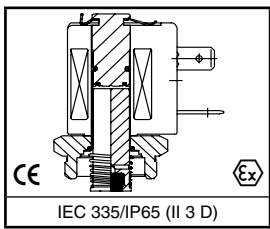
coil type	nominal power ratings				ambient temperature range (°C)	protection
	inrush	holding	hot/cold	=		
	(VA)	(VA) (W)	(W)	(W)		
CM22-FT	14,5	11	6,3	-	-20 to +85	moulded IP65
CM22-FI (1)	-	-	-	15/22	-20 to +85	moulded IP65

(1) Intermittent duty, Relative Duty Time is 10%. Max. on time 1 min.

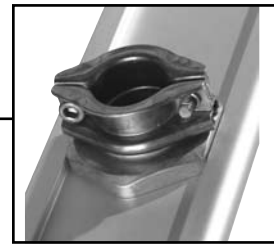
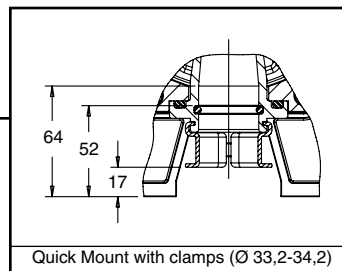
SPECIFICATIONS

pipe size	orifice size (mm)	flow coefficient Kv (m³/h) (l/min)		operating pressure differential (bar)			coil type		catalogue number
				min.	maximum (PS)		~	=	
					air				
1"	25	23	384	0,30	~ 8,5	= 8,5	~ CM22-FT	= CM22-FI	.. E355A ...

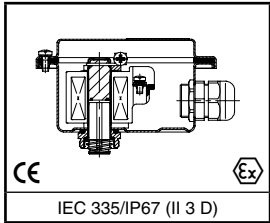
ORDERING INFORMATION - for example: SC E355A J 06 (Specify Voltage/Hz) + **Dimension code (specified on next page)**



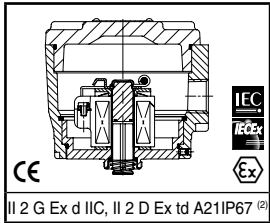
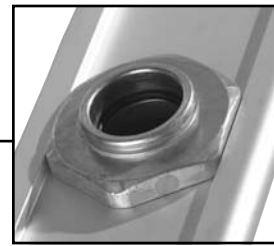
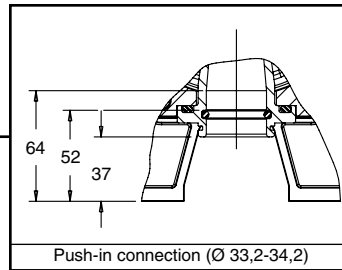
SC (DU) E 3 5 5 A



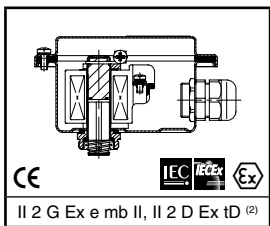
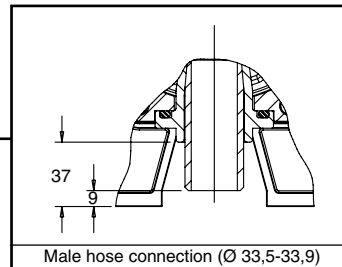
06⁽¹⁾



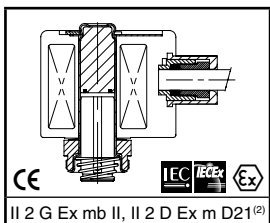
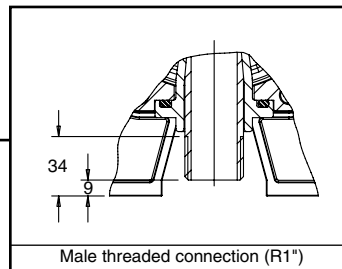
WP (WPDU)



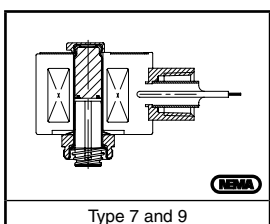
NF



EM



PV



EF

⁽¹⁾ Specify required number of valves between 01 and 24

⁽²⁾ Exact temperature class depends on wattage and max. ambient temperature (see also page 48 to 56)

ORDERING INFORMATION DIMENSION CODE

Start distance	A	(min. 110 mm)
Standard pitch	B/C/D	(min. 120 mm)
Deviating pitch	B/C/D	(min. 120 mm)
End distance	A	(min. 110 mm)

Example I: Dimension code for a 4 valves tank system:

Operator	SC, 24V/DC
Connection	Quick Mount
Number of valves	4 pcs
Start and End distance	110 mm
Standard pitch	120 mm
Deviating pitch	Between valve 2 and 3 is position C (see fig. 2); 150 mm
Catalogue number	SC E355AJ04 24V/DC
Dimension code	110120C150
Complete order number	SC E355AJ04 24V/DC + 110120C150

Example II: Dimension code for a 8 valves tank system:

Operator	SC, 230/50
Connection	Thread
Number of valves	8 pcs
Start and End distance	150 mm
Standard pitch	160 mm
Deviating pitch	Between valve 2 and 3, 4 and 5, 6 and 7 is position C, E and G; 200 mm
Catalogue number	SC E355AM08 230/50
Dimension code	150160CEG200
Complete order number	SC E355AM08 230/50 + 150160CEG200

For assistance please consult our website: www.asconumatics.eu


DIMENSIONS (mm), WEIGHT (kg) 

Fig. 1 (front view)

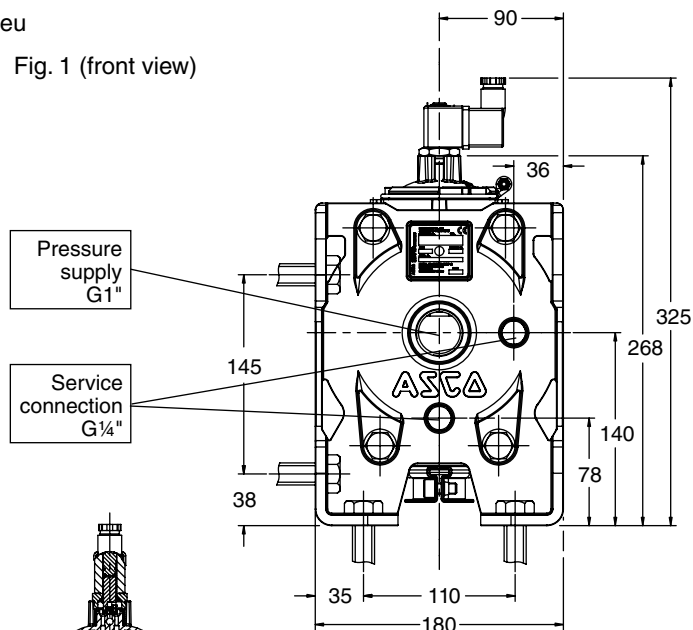
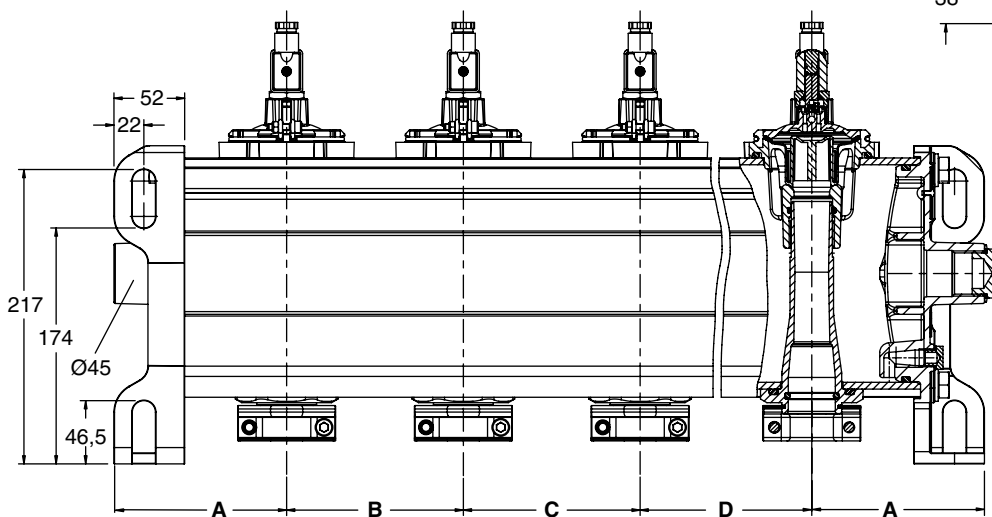


Fig. 2 (side view)



OPTIONS


- Special customized executions
- Waterproof enclosures with embedded screw terminal coil according to protection class IP67, CEE 10
- Explosionproof solenoids for hazardous locations according to "ATEX" and national standards
- Explosionproof and watertight solenoids according to "NEMA" standards
- Separate Quick Mount clamps for outlet connection; kit number: **C132-679**

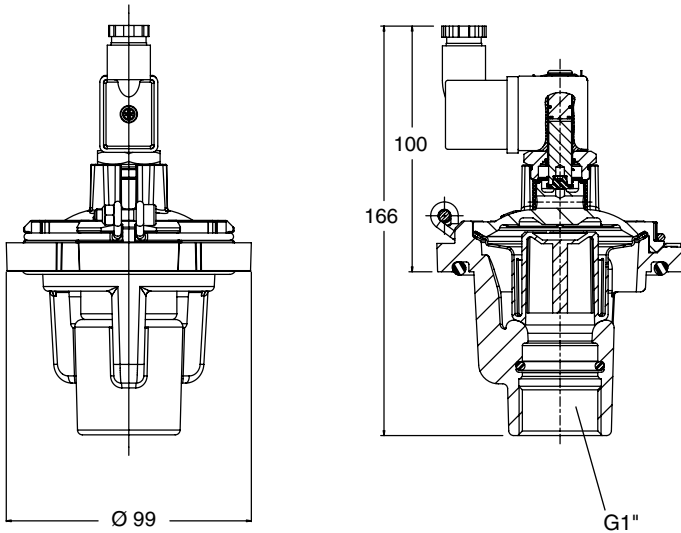
INSTALLATION

- Tank system can be mounted in any position using the standard brackets integrated in the end cap (M12 bolts recommended) without affecting operation
- Pipe connection identifier is: R = according to ISO 7/1, G = according to ISO 228/1 or Ø for other outlet connections
- For Quick Mount types tightness is achieved by the O-ring sealing on the pipe (1" = Ø33,2 to 34,2) according to ISO 4200
- Installation/maintenance instructions and declaration of conformity are included with each tank system
- Spare valves, spare parts kits and coils are available

SEPARATE / SPARE POWER PULSE VALVES

FEATURES - (same as for the tank system)

DIMENSIONS (mm), **WEIGHT** (kg) 



SPECIFICATIONS

pipe size	standard catalogue catalogue number	ATEX dust II3D catalogue number	weight (1)
(G) Female threaded connection (ISO 228/1)			
1"	SC E353A237	SCDU E353A237	0,558

(1) = incl. coil and connector