

FEATURES

- Power Pulse Tank System using aluminium profile and end covers with CE approval according to Directive 97/23/EC for Pressure Equipment
- Full immersed valve system with special springless piston/diaphragm design offers highest peak pressure and best flow performance operating features required for dust collector applications
- The high quality TPE piston/diaphragm guarantees a long operating life and a large temperature range
- Possibility to apply different combinations of pitch distances and upto 24 valves
- Easy to connect to other tank systems. Service connections for different accessories such as: filter regulator, pressure gauge, safety valve and automatic / manual drain valve
- Several blow pipe connections available, such as: Quick Mount, push-in, hose or threaded

GENERAL

Differential pressure (PS) 0,3 to 8,5 bar [1 bar = 100 kPa]
Ambient temperature range -20°C to +85°C

Tank System

volume 0,20 dm³ per cm tank
recommended min. tank volume 10 dm³ (equals 500 mm tank length)
min. pitch distance 120 mm
maximum length 3000 mm
min. pulse time 50 ms

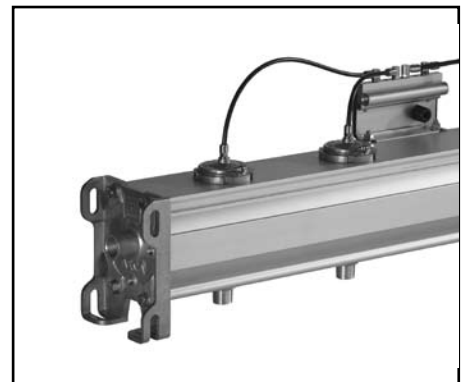
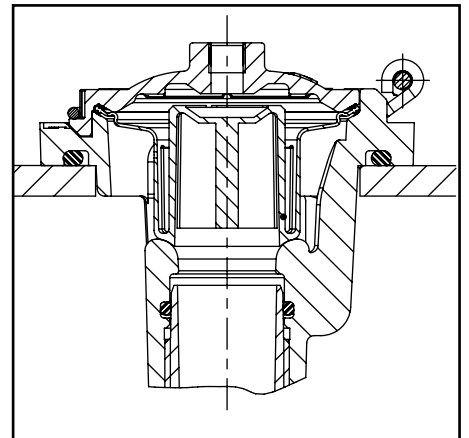
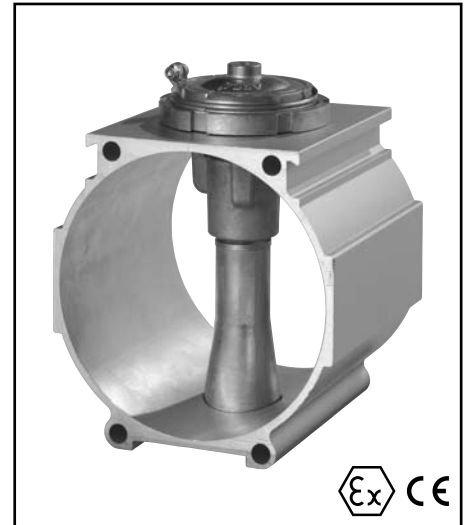
fluid	temperature range (TS)	piston/diaphragm
air	-20 to +100 °C	TPE (thermoplastic polyester elastomer)

CONSTRUCTION

Tank Anodized aluminium
Adapter/body Aluminium
Clipping Stainless steel
Clamps Stainless steel
Bolts (clamps) Stainless steel
Sealings & disc NBR (nitrile)
Piston/diaphragm TPE (thermoplastic polyester elastomer)

RECOMMENDED PILOT VALVES AND BOXES (2/2 NC function)

main pulse valve catalogue number	remote pilot valve connection	orifice size (mm)	pilot valve box (IP65)	single pilot valve (IP20)
E355AN .. E355AO .. E355AP .. E355AQ ..	G1/8	3,6	pilot box series 110 2 to 12 pilots 1/8	US E257A001 US E257A002 US E257A003

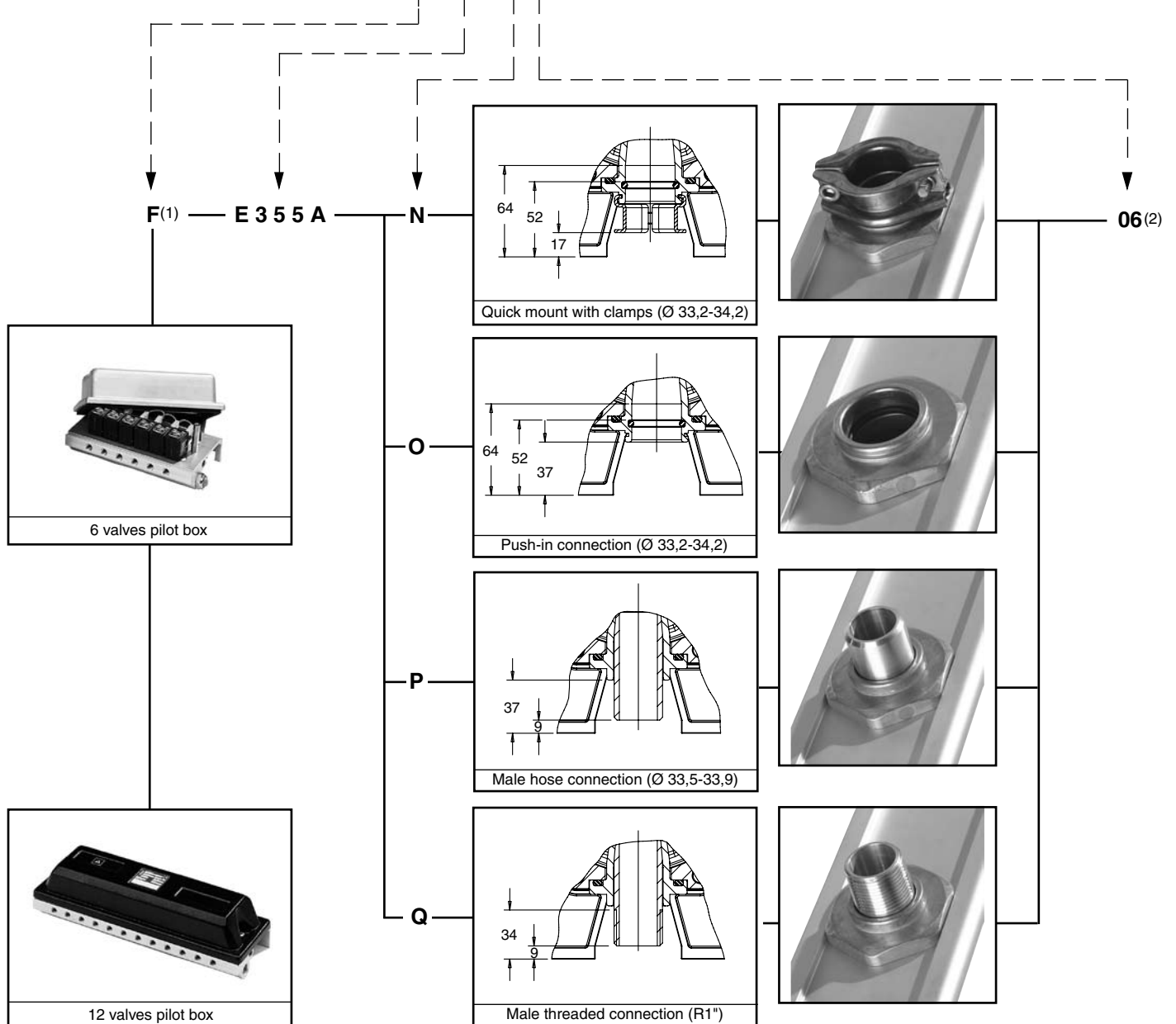


X003GB-2009/R8 Availability, design and specifications are subject to change without notice. All rights reserved.

SPECIFICATIONS

pipe size	remote pilot connection	orifice size	flow coefficient Kv		operating pressure differential (bar)		catalogue number
					min.	maximum (PS) air	
	G	(mm)	(m³/h)	(l/min)			
1"	1/8	25	23	384	0,30	8,5	. E355A ...

ORDERING INFORMATION - for example: **F E355A N 06** + Dimension code (specified on next page)



(1) for a selection of pilot boxes see pages X003-29 to X003-38

(2) specify required number of valves between 01 and 24

ORDERING INFORMATION DIMENSION CODE

Start distance	A	(min. 110 mm)
Standard pitch	B/C/D	(min. 120 mm)
Deviating pitch	B/C/D	(min. 120 mm)
End distance	A	(min. 110 mm)

Example I: Dimension code for a 4 valves tank system:

Operator	Remote, pilotbox controlled 24V/DC without heating
Connection	Quick Mount
Number of valves	4 pcs
Start and End distance	110 mm
Standard pitch	170 mm
Deviating pitch	None
Catalogue number	F E355AN04
Dimension code	110170
Pilotbox	S G110A040 24V/DC
Complete order number	F E355AN04 + 110170

Example II: Dimension code for a 12 valves tank system:

Operator	Remote, controlled with external pilotbox
Connection	Thread
Number of valves	12 pcs
Start and End distance	130 mm
Standard pitch	140 mm
Deviating pitch	Between valve 3 and 4 is position D; 180 mm and between valve 7 and 8 is position H; 200 mm
Catalogue number	E355AQ12
Dimension code	130140D180H200
Complete order number	E355AQ12 + 130140D180H200

For assistance please consult our website: www.asconumatics.eu

DIMENSIONS (mm)



Fig. 1 (front view)

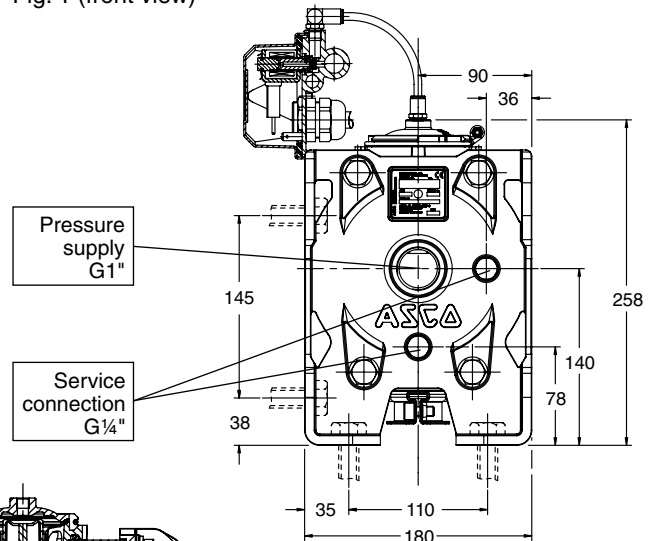
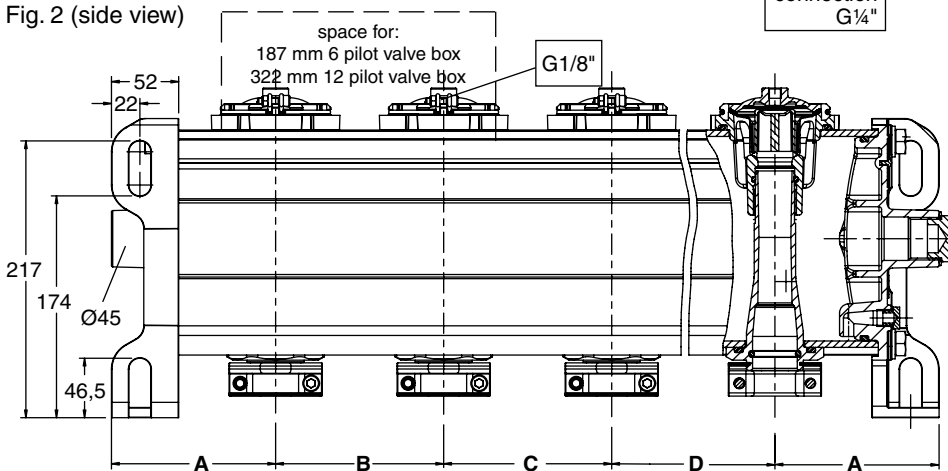


Fig. 2 (side view)



OPTIONS


- Special customized executions
- Pilot boxes containing 2 to 12 pilot valves
- Separate pilot valves can be equipped with explosionproof solenoids for hazardous locations according to "ATEX" (CENELEC) and national standards
- Separate Quick Mount clamps for outlet connection; kit number: **C132-679**

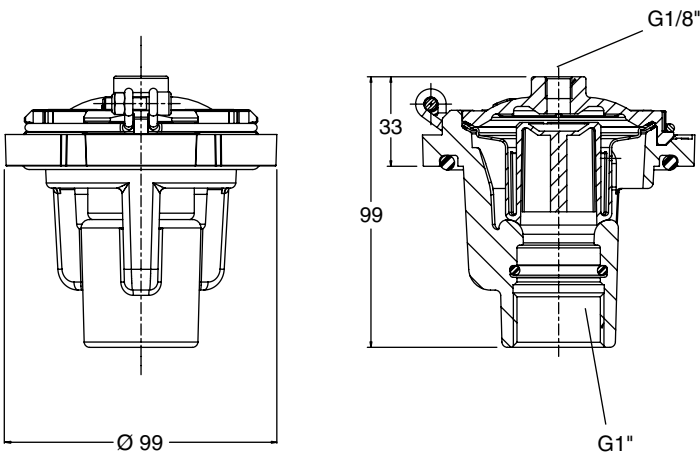
INSTALLATION

- Tank system can be mounted in any position using the standard brackets integrated in the end cap (M12 bolts recommended) without affecting operation
- Pipe connection identifier is: R = according to ISO 7/1, G = according to ISO 228/1 or Ø for other outlet connections
- For Quick Mount types tightness is achieved by the O-ring sealing on the pipe (1" = Ø33,2 to 34,2) according to ISO 4200
- When connecting piping or tubing to the G1/8 connection in the valve bonnet, the remote ASCO pilot valve should be mounted as close as possible to the main pulse valve. Connection tubing lengths of 3 meter or less have little effect on the pulse response. Installations with over 3 meter of tubing must be tested under actual operating conditions. Tubing with Ø 6 mm is recommended for all installations
- Installation/maintenance instructions are included with each tank system
- Spare valves, spare parts kits and coils are available

SEPARATE / SPARE POWER PULSE VALVES

FEATURES - (same as for the tank system)

DIMENSIONS (mm), **WEIGHT** (kg) 



SPECIFICATIONS

pipe size	catalogue number	weight
(G) Female threaded connection (ISO 228/1)		
1	E353A231	0,428